

Bea Care Newsletter

Autumn Edition

Welcome to our Autumn edition of the Bea Care Newsletter. As the seasons change and we welcome the crisp mornings, colourful leaves and fresh beginnings that autumn brings, we're excited to share updates, highlight participant stories and showcase the supports we provide across our SIL, SDA, STR, MTA and community support services.

This season is a wonderful reminder of growth, reflection and new opportunities – and we look forward to continuing to walk alongside our participants, families and support networks throughout the months ahead.



Bea Care Participant committee

We are proud to introduce the members of the Bea Care Participant Committee:

- Terrence
- Gary
- Tamara
- Melisa

The Committee held its inaugural meeting at the Bea Care Social Studio on 18 February. Since then, members have met twice and have already begun providing valuable ideas and feedback to management to support ongoing service improvements.

The Committee is currently planning exciting events for the year ahead, including an Easter egg hunt and BBQ, as well as a mid-year dinner dance. We look forward to sharing more updates as their great work continues!



Get in touch

Email: info@beacare.com.au

Phone: 1300 042 984



Current Vacancies & Availability

MILROY



- 1 female vacancy available
- Fully accessible, high-support property

PEPPERCRESS

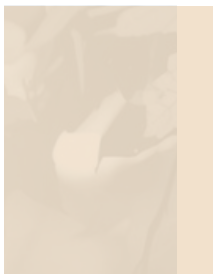
- 1 bedroom available – sharing with two other ladies.
- Suitable for: SDA/ MTA/ High Physical Support.



MCKENZIE STREET, GOLDEN SQUARE



- Fully accessible, flexible short stays and medium-term accommodation
- Convenient central location with a homely, fully supported environment



New Programs

Social Studio & The Out 'n' About Club

In February, we were delighted to host our Valentine's Day card and chocolate-making event. The day was well attended by Bea Care participants and members of the wider community. It was a wonderful opportunity for everyone to come together, share conversations, and connect in a relaxed and welcoming social setting.

Valentine's Day Event



As part of our ongoing commitment to community inclusion, Bea Care will continue to offer free opportunities for people with disability to connect and socialise. Our next free event will be a Women's Pamper Day in celebration of International Women's Day – a special occasion to relax, celebrate, and enjoy time together.

We are now taking referrals for the Social Studio and are pleased to offer the following weekly programs:

The Social Studio Weekly Programs

Monday

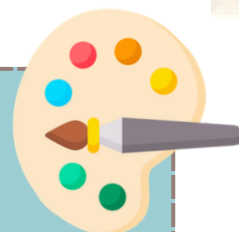


Everyday cooking and shared lunch

- Easy everyday meals and shared lunch
- Create your own cook book

9.00am – 12.30pm

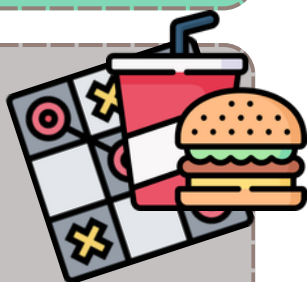
Tuesday



Creative Space- Expression through Art
Explore different mediums- painting, drawing, clay, collage and textiles

9.30am – 12.30pm

Wednesday

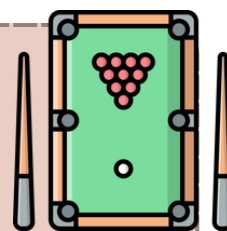


Warm and Welcome Wednesday

- Shared lunch, games and craft

12pm- 3pm

Thursday



Pub night- Windemere Hotel

- Join us for a shared pub meal and a game of pool

5pm – 8pm

Friday



Life craft- Work and Life Skills

Get ready to explore the world of work and discover life skills to increase your independence

9.30am – 12.30pm

Mini Chill Fridays (Children)

Snacks and movie

3pm – 5pm

Friday Chill (Adults)

Pizza and movie

5.30pm – 8pm



Out & About Club – Expressions of Interest Now Open!

We are excited to announce that our Out & About Club will be launching in April 2026, and we are now taking expressions of interest! The Out & About Club is all about building friendships, getting out into your local community, exploring regional Victoria, and experiencing some of the wonderful attractions Melbourne has to offer. It's a fantastic opportunity to connect, have fun, and enjoy new adventures together.



When: First Wednesday of every month



Where: A new destination each month!

Time	Activity
April – Bendigo	Explore the iconic Central Deborah Gold Mine, enjoy a ride with Bendigo Tramways, stroll through Rosalind Park & Conservatory, and visit the Bendigo Chinese Museum.
May – Echuca & the Murray River	Discover Echuca's historic Port Precinct, enjoy a Paddle Steamer Cruise along the Murray River, and relax with Fish & Chips by the water.
June – Shepparton	Visit the Shepparton Art Museum, explore the Museum of Vehicle Evolution, and enjoy an optional walk around Victoria Park Lake.
July – Melbourne	Wander through the beautiful Royal Botanic Gardens Victoria. Discover this inner-city oasis with live commentary from the comfort of an open-air minibus, followed by a picnic in the park.
August – Melbourne	Spend the day at Melbourne Zoo.
September – Werribee	Experience a safari adventure at Werribee Open Range Zoo.
October – Geelong	Explore the Geelong Waterfront and Eastern Beach, visit the National Wool Museum, and stroll through the Botanical Gardens.
November – Echuca & the Murray River	Another opportunity to enjoy the charm of Echuca and the Murray River.
December – Melbourne CBD	Celebrate the festive season with Christmas lights and decorations in the Melbourne CBD, plus time for some Christmas shopping.



If you or someone you support would like to join us on these exciting monthly adventures, we would love to hear from you!

Email: info@beacare.com.au

Phone: 1300 042 984



EMILY'S CRUISE

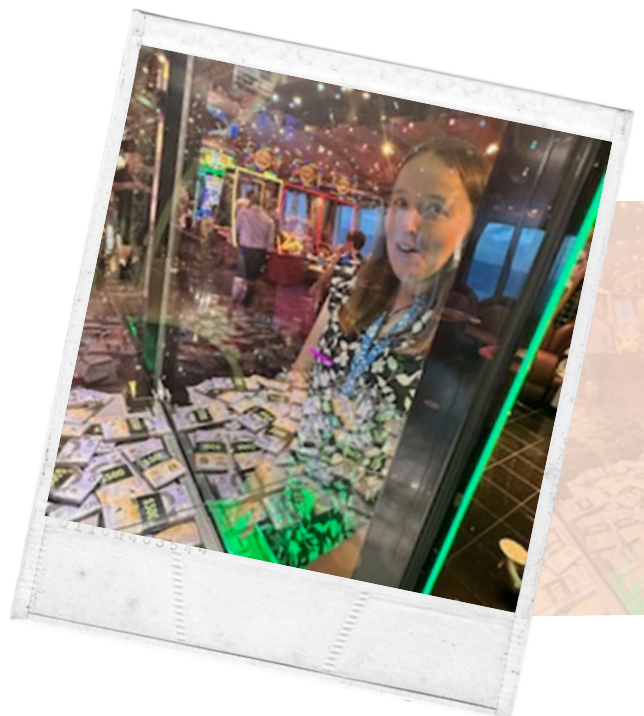
Emily recently enjoyed a wonderful holiday adventure with her mum aboard the magnificent Carnival Splendor.

Her journey began with a flight to Sydney, where she would board the ship. When Emily first saw the Carnival Splendor, she could hardly believe how big it was – towering above the harbour and stretching as far as she could see. Once inside, she was even more amazed. The bright lights, multiple decks and endless activities made it feel like a floating city!



Emily made the most of every moment onboard. She loved participating in the activities and especially enjoyed playing bingo, excitedly listening for her numbers to be called. She had so much fun racing down the water slides and laughing the whole way. Mini golf was another favourite, where she happily practised her putting skills.

In the evenings, Emily attended a couple of the live shows. While she enjoyed watching the performances, she discovered she preferred the hands-on activities – getting involved, staying active and being part of the fun. Em said “My favourite thing on the cruise was using a claw I didn’t win but I was very close but I enjoyed it and bingo was my second favourite, water slides were too cold but I went on the yellow and the green one”



Thank you for your partnership and for the incredible work you do in supporting participants every day. We wish you all a very happy and relaxing Easter and look forward to our continued collaboration.



Easter fun fact

In Switzerland, a cuckoo delivers Easter eggs, and in parts of Germany, a fox does – not the bunny!

Contact Us

Email: info@beacare.com.au

Phone: 1300 042 984

Website: www.beacare.com.au

